



Upturn round the corner?

Total Processing & Packaging 2010 is set to benefit from the economic upturn expected in the latter half of 2009, which many believe will accelerate during the first half of 2010, according to research undertaken by organisers Reed Exhibitions.

Both end users and exhibitors took part in the survey which was conducted during July 2009.

Thirty five per cent of participants were identified as major end users, more than half coming from the food and beverage sectors and one third from household products and pharmaceutical disciplines.

Seventy six per cent expect order activity to increase before the end of 2009 and most expect investment in equipment to continue to grow throughout 2010.

Price, efficiency and speed continue to be key factors affecting purchasing decisions, with after sales support and suppliers' reputation also figuring strongly.

Views on whether or not the weakness of Sterling helped UK business were mixed and only 50 per cent felt Government intervention would help.

Total Processing & Packaging takes place at the NEC Birmingham:
May 25-27 2010.
www.totalexhibition.com

Life made easy for show visitors

The PPMA Show caters to all the major end user sectors and there is no better place to quiz the experts; as Chris Buxton says, despite the digital age people will always want – and need – to meet face-to-face.

If you are pressed for time why not take advantage of the PPMA Show "Plan Your Visit" Facility which will help visitors organise their trip.

Visit www.ppmashow.co.uk select 'plan your visit', then the product categories that you are most interested in and click 'search'. A personal route around the exhibition will be created, providing you with a list of the exhibitors applicable to your needs, along with an illustration of their location plotted on the show floor plan.

As the emerging economies

become better established and the need for processed food grows, so does the global reach of the processing and packaging sector.

The PPMA China office continues to grow and Chinese staff will be on stand (C90) to discuss developing activities in this part of the world.

Indian delegation

The potential opportunities to develop processing and packaging machinery in India are enormous. Despite a population in excess of a billion people food processing is still in its infancy with less than 5 per cent of food being processed.

The PPMA will be hosting an inward mission from India. Consisting of 12 large producers the group is hoping

to source processing and packaging technologies from the UK.

Leading the delegation is Sanjit Rodriguez, director, Industries' Trade and Commerce. The group has been organised by Dr Sangam Kurade, vice president, Goa State Industries Association together with Beryl Nasse, British Business Group Goa.

The delegate companies are responsible for processing and packaging a wide variety of products and offer an excellent opportunity to develop relationships. Areas of interest include: fish; bakery; snacks; confectionery; ready meals; soft drinks; dairy; beers, wine & spirits; household; and logistics. More show info: www.ppmashow.co.uk

Machinery Excellence from Starpack and the PPMA

Encompassing the PPMA-sponsored Machinery Award of Excellence the Starpack Industry Awards 2009 will be celebrating its 50th Anniversary during the show. The dinner and awards ceremony will be held on the evening of Wednesday September 30 in the Concourse Suite, Birmingham NEC, offering a great opportunity to entertain staff and customers and celebrate the very best the packaging sector has to offer.

The Machinery Award of Excellence was introduced in recognition of the essential role that the machinery sector plays in ensuring that the product reaches the end consumer.

Judges for the machinery award included stalwarts of the sector Andrew Manly, formerly general secretary of the PPMA, and Mike Maddox, formerly editor of Machinery Update.

Both were encouraged by machinery companies' ability to improve their offerings through 'smart thinking'.

Maddox said: "Basic machine types are being revolutionised by modularity, customisation and the use of complementary technologies, such as robotics. For example, machines are now able to identify a potential problem before it occurs and deal with it. This enables the

end user to keep lines running while maintaining quality."

Manly was particularly impressed by the cognizance being paid to sustainability: "Environmental issues are being tackled more directly, not just in improved processes and control but in the design, functionality and the lifetime costs of running machines."

To find out who won the Machinery Award of Excellence and the other categories, join the 50th anniversary celebrations by contacting: Rachel Brooks – T: +44 (0) 1476 513885 E: Rachel.Brooks@iom3.org www.starpack.uk.com

World debut for MAP wrapper and reclosure

PFM Packaging Machinery (E30) is staging the world launch of a reclosure system for flexible packaging.

The new BG4800 EWL high speed MAP flowrapper, demonstrated for the first time, is configured specifically to produce the new Plix-Pack bags by attaching polyethylene tape, moulded with tiny hooks that mate to close the top of the bag. (See *MU Jul/Aug 09 p10*.)

Chris Bolton, sales and operations director, PFM explained, "The tape is much lower gauge than some alternative reclosure solutions, making bag-edge sealing through the tape more reliable.

It allows gable top bags to incorporate a full width system."

Operation is the same as a conventional MAP flowrapper but with the longitudinal seal made at the side where the Plix-Pack profiles are attached to the inner faces.

Also, instead of the traditional box or D-motion sealing jaws employed on high speed MAP machines, a series of jaws set around a cam wheel give longer dwell times for hermetic sealing.

Higher dwell times, typically 10 times greater, improve the quality of this seal while allowing them to be made through the Plix-Pack profile by giving time for the polymer in the profile to

flow and prevent voids and hence leaks in the cross seals.

Since this allows the profile to be fed continuously, rather than be cut to length and placed, machine speed can be raised by 5-10 per cent to about 150 packs/minute on 400g packs.

Plix-Packs can also be made on vertical PFM bagging machines with patches rather than strips of tape, providing a more durable alternative to self-adhesive labels used for bag reclosure, says PFM. Tobacco pouches and packs of pasta, coffee and rice are among product examples.

T: +44 (0) 113 239 3401
E: sales@pfmuk.com

Waving the flag for sensors

SICK UK (C50) is marking the launch of its new Industrial Instrument Division by unveiling two flagship level and pressure sensors.

The new hygiene certified instruments – LfV200 vibrating level sensor and PHT pressure transmitters – are the first to be released from the new division.

LfV200, a vibrating level sensor switch, offers high reliability, on/off liquid or granular solid detection for level indication or dry running protection in tanks and pipes independently of density, viscosity or electrical properties.

It is ideal for a wide range of food and beverage applications, providing reliable indication of product presence or absence, says SICK.

The -40°C – +150°C temperature range enables it to withstand Clean-In-Place and Sterilise-In-Place procedures,



and it comes with EHEDG and FDA approvals.

SICK's new PHT pressure transmitter series include absolute, gauge and compound pressure measurement and features a high sanitary design with a flush-mounted 316 stainless steel diaphragm free of gaps and dead spaces. Hygiene

process connections include tri-clamp, DIN, ISO-clamp and Varivent connections, with 3-A sanitary Standards and EHEDG certification pending.

Suitable for CIP and SIP cleaning, they will withstand temperatures up to 150°C.
T: +44 (0)1727 831121
E: info@sick.co.uk

SHOW BRIEFS

- **Partners in Packaging (B42)** will demonstrate a CFG Autolock carton erector from MGS automatically erecting a crashlock bottom carton being fed onto a conveyor where an iSys intermittent pick and place feeder will place a sachet into the box.

This is followed by a Streamfeeder Pro series universal friction feeder/card feeder, feeding an instruction booklet, while the new Unique Solutions model US 1000 2D/3D promotional item feeder will place a small sachet or toy into the carton.

T: +44 (0) 1706 369000
E: sales@partnersinpackaging.com

- **Atwell Labellers (C23)** will be exhibiting its new 'linerless' print & apply system plus its range of small desktop semi automatic printers and labellers.

Also on show are fully automatic overhead, top & bottom, front & back, wraparound, tri-roller, print & apply and cross web labelling systems, as well as IP65 rated labelling systems.

T: +44 (0) 1444 239970
E: sales@atwell-labellers.co.uk

- **UniTrak Powderflight (B7)** has developed an updated version of its TipTrak elevator for food products enabling the equipment to be cleaned in place without dismantling.

Based on an open tubular construction, sealed bolt sleeves now prevent water entering, claims UniTrak.

T: +44 (0) 1457 865038
E: info@unitrak.com



SHOW BRIEFS

■ **Wittenstein (D42)** will showcase its range of products for precision machine control including some new additions to the alpha gear head family and its Cymex software technology.

The company makes a range of planetary gear heads (ratios 3 – 100), right-angle worm gearboxes (ratios 4 – 40), turntable gear heads, torque limiters, rack and pinion and ball screws, plus rotary servo actuators and linear actuators.

T: +44 (0) 870 844 0120
E: sales-uk@wittenstein.co.uk

■ **Codeway (B43) UK** distributors for Avery Dennison will demonstrate a range of specialised apply heads – including blow box and fan assisted heads.

Nice Label Enterprise software provides complete central control of all labelling functions on a global scale, says the company.

Labels carry not only text and standard bar coding, but also GS1 DataBar and other industrial 2D formats.
T: +44 (0) 1206 751300
E: identify@codeway.com

■ **CAD Schroer (D45)** will launch a ‘factory hotspot modelling’ service, initially offered exclusively to PPMA 2009 visitors, it says. The service delivers a 3D model, complete with virtual factory walk-through and review software, to owner/operators with immediate requirements for facility adaptation and to visualise the issues and examine possible solutions.
T: +44 (0) 1223 460408
E: sales@cad-schroer.co.uk

Customers to define machine performance

Customers will be able to define a machine’s specification and performance at the time of purchase and revise this throughout the life of the machine thanks to the modular Carrera 4000.

The first of a new range of horizontal packaging machines from **Ilapak (C20)**, the machines feature the latest software platform. This includes an electronic control with internet connection for remote servicing and monitoring, software to predict failures in advance and the ability to minimise energy and material consumption.

Ilapak claim that the new Carrera 4000 will lower customers’ operating costs per pack to a new level.

One energy saving feature is the use of recuperation systems in the motor drives, says the company.

Also on show will be the open-frame Vegatronic 4000 vertical, form, fill and seal machine capable of producing Amcor’s PushPop®, an easy to open, stand-up pack, designed



to replace bag-in-box, lined cartons, paper-based thick wall laminates, standard side fold bags and pillow packs.

Consumers can ‘push and pop’ the pack open with their thumbs, creating a wide opening, making it suitable for snacks consumed directly from the pack.

Additionally PushPop® reduces packaging and food waste, says Ilapak.

Another plus is that the eye-catching pack creates true on-shelf differentiation, while its stackability is another major

advantage. Vegatronic 4000 is capable of packing a wide range of pack styles, including Quattro, Doy-style stand up packs, and standard pillow packs for a range of applications including cheese, confectionery, savoury snacks and nuts.

On display for the first time this year, the Vegatronic 2000 VFFS also features an open frame design, to meet the stringent hygiene regulations of the food industry.

T: +44 (0) 20 8797 2000
E: sales@ilapak.co.uk

Mechanical energy saver

Making their debut are a new series of ‘mechanical’ thermoformers that are claimed to use considerably less power while achieving higher output and performance than other machines of their type in the market.

Ilpra (E10) says the F3 thermoforming machine is the first of its kind on the UK market and is suited for the packaging of food and non-food products.

It is designed with totally mechanical movements to allow a significant reduction in energy consumption due to the limited use of compressed air.

When compared with other thermoformers, using pneumatic drive only, estimated energy savings claimed are from 40 – 70 per cent, depending on the application.

The brushless motors used for the operation of the various

forming and sealing stations can double the mechanical speed of the machine (up to 40 cycles/ minute). Additionally the mechanical option results in less need for maintenance and a very quiet machine in the workplace, says Ilpra.

The F3 is also able to use recyclable materials such as PET and bio-compostable PLA.
T: +44 (0) 1793 814604
E: office@ilpra.co.uk

CLARiTY an ICE cool print system

Interactive Coding Equipment (ICE) (E40) will be launching the latest version of the CLARiTY® operating system for its range of Zodiac™ thermal transfer overprinters and its Torus™ high definition inkjet printer models.

To minimise cost per print the Zodiac has a number of ribbon save modes as standard, augmented with the latest version of interleaved radial ribbon save.

When overprinting a radial print on a flow wrapper some thermal transfer printers can waste as much as 80 per cent of the ink ribbon, says ICE.

Radial ribbon mode can automatically move and interleave multiple prints to provide a five-fold reduction in cost per print with no degradation of print quality, says the company.

The new printer cloning feature available in CLARiTY allows the complete printer configuration to be saved directly onto a USB-key.

This profile is stored on the key and is used to speed up commissioning of newly purchased equipment.

Maximum uptime is also

achieved with the Zodiac print sensor logic which compares sensor encoder input information (speed) with inputs from the host packaging machine to identify faults such as incorrect installation or a break in the packaging web.

Barcode support has been increased. In addition to typical point-of-sale barcodes, the release of this software adds support for the GS1-Databar (RSS) expanded and expanded stacked barcode symbologies, claims ICE.

The barcode rendering software supports all standard barcode features along with intelligent human readable generation with automatic bracketing for application identifiers.

Warnings are generated



where application identifiers do not follow GS1 rules. CLARiTY now includes the QR barcode from Japan which is being used increasingly for commercial tracking applications and consumer-oriented applications.

The software also expands on the power saving features of the Zodiac. For example, the user interface will dim after a period of inactivity (typically one minute) and turn off after a longer period, even when the printer is in normal operation, thus reducing power consumption.

The screen automatically reactivates to display relevant errors or warnings, or when an operator presses the touch-screen, explains ICE.

T: +44 (0) 1159 640144

E: info@uk.interactivecoding.com

Multi-substrate thermal inkjet

Domino UK (C11) will give the UK premiere to its G-Series thermal inkjet printer and A-Series *plus* Duo range of continuous inkjet (CIJ) printers.

The G-Series meets increasing requirements for improved quality and high speed printing onto an expanding and diverse array of substrates giving 600dpi resolution at speeds of up to 300m/minute. Domino also offers a multi-substrate, fast-drying ink. The G-Series is capable of switching between water and ethanol based inks for printing onto porous and non-porous materials.

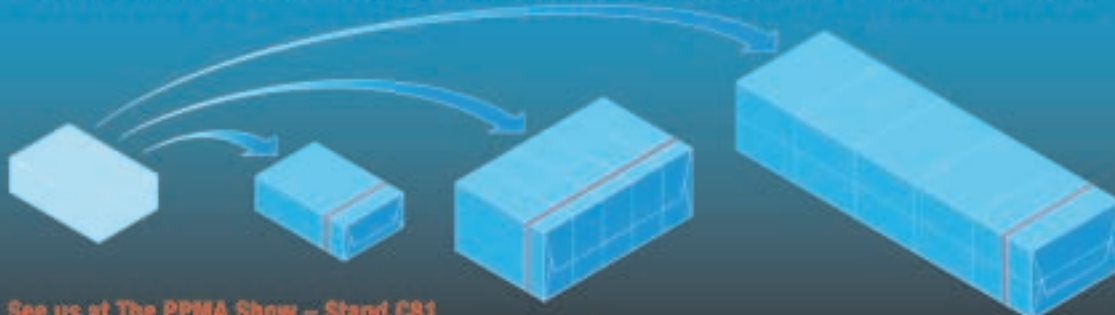
The A-Series *plus* Duo continuous inkjet printers are able to match the throughput levels demanded by high speed canning or bottling lines.

T: +44 (0) 1954 782551

E: enquiries@domino-uk.com



"dedicated to creating systems to overwrap the World's products"



See us at The PPMA Show – Stand C81

sales@mardenedwards.com

www.mardenedwards.com

Tel: +44 (0)1202 861200

MARDEN
ME
EDWARDS

Shaking up some tasty food answers

The new SHAKA™ retort from STERIFLOW Thermal Processing will make its first appearance at a UK exhibition along with a solids depositor from US-based Multi-Fill.

UK agent **F. Jahn & Co (D71)** says the SHAKA™ retort system differs from conventional retorts as, during processing, the containers are vigorously shaken at a frequency of 100 – 150 cycles/minute. The agitation of the product is made through a horizontal movement of the baskets, speeding up heat penetration considerably.

Cycle times can be reduced by a factor of 4 to 6 compared with standard static or rotary retorts. The reduced process time has a positive impact on the quality of the products in terms of colour, taste and vitamin preservation. The retort can be used with all types of containers such as cans, glass jars, plastic trays and pouches.

STERIFLOW has carried out tests on baby food, soups, white sauces, dairy products, vegetables and ready meals.

The results indicate better tasting sterilised products with a



‘fresher’ mouth feel compared with other retorted products on the market. Studies by CCFRA in the UK, CTCPA, France and Norconserv, Norway, confirm these results.

Multi-Fill’s solids depositor features a plc-controlled volumetric filling head. It is capable of depositing precise product portions such as cooked pasta and rice, vegetables, fruits and refrigerated salads, into trays, cartons or pouches, says Jahn.

Also on offer is the Multi-Fill

product distribution system for the MPFSC120-01 automatic depositor, enabling it to work with multi-lane machines. This system, aimed particularly at ready meals, can handle hard to fill products at speeds up to 120 containers/minute.

One MPF filling head can now deal with up to eight containers in various combinations or patterns. Alternatively, the distribution system can be used as a stand-alone unit.

T: +44 (0) 20 8977 8822

E: sales@f-jahn.co.uk

Recipes for success

Holmach (E20) will focus on cooking and pasteurising highlighting several new processing products.

Visitors will be able to taste hazelnut creams, jams, tomato salsa and pesto, all prepared on the Roboqbo cut-cook-cool cooking vessels by Italian chef Marco Di Carlo.

Already popular with UK ice cream, dips and dressings manufacturers, the machine is ideal for small to medium processors where a quality taste and colour is favoured over volume, says Holmach.

Terlet will demonstrate the latest version of its Terlotherm scraped surface heat exchanger fitted with special scrapers that are designed to resist damage from abrasive products such as confectionery, preserves and bakery ingredients. The low rotor speed of the Terlotherm seeks to eliminate damage to particulates such as soft fruit. The heat exchanger incorporates one seal, one bearing and one drive.

NIKO, of Dusseldorf, will have a small tunnel pasteuriser in operation. Visitors will see the simulation of continuous pasteurisation for pouches, pots, cartons and jars.

T: +44 (0) 1780 749097

E: sales@holmach.co.uk

Mixing expertise on show

John R. Boone (B9) will demonstrate several powder, granule and paste mixers including the new tilting helical blade mixer for sugar paste and delicate products such as fruit cake and pastry mixes.

It can also be used for thick gel mixes, spice and flavours, meat mixes, breakfast cereals and building adhesives prior to extrusion.

Batch sizes range from 2 –

10,000 litres. Boone’s industrial mixer range incorporates the latest power saving drives.

Other equipment will include a rotary drum blender, which is a low shear drum for tea, coffee, cocoa, spices, muesli, rice flakes, seeds, confectionery, gelatine and salts. It also offers spray coating applications. Batch sizes range from 2 – 25,000 litres.

The horizontal delta blade

mixer is a high shear plough for catering mix, cookies and molasses sugar.

It is also used for making minor liquid additions to powders without agglomeration and for breaking down soft agglomerates and cohesive powders when mixing. Batch sizes range from 2 – 7,500 litres, says the company.

T: +44 (0) 1260 272894

E: sales@jrboone.com

New partner

Stickpack and vertical form-fill-seal machinery makers Inever of Spain will exhibit on its new UK partner **Integrapak’s** stand (**D60**). Features of the range include inbuilt laser scoring for easy-open systems, full access to seal jaws and cutting knives and thermal transfer printing. Inever also designs its own filling and dosing systems.

T: +44 (0) 1420 593680

E: info@integrapak.co.uk

U sell it...

...we'll label it

Fast, Reliable and Easy to use Semi Automatic and Bespoke Fully Automatic Labelling Systems

- Programable Stepper IP55 & IP65 Label Heads
- In-line Applications & Cross Web Labelling Systems
- Project Management, Design
- Servicing and Spares
- Desktop Printers
- In-line coding and consumables
- RFID labels & solutions
- Plain & printed labels



Atwell self-adhesive Labellers

18 Bolney Grange Business Park,
Stairbridge Lane, Hickstead,
West Sussex, RH17 5PB, UK

Tel: +44 (0) 1444 239970

Fax: +44 (0) 1444 246609

E-Mail: sales@atwell-labellers.co.uk

www.atwell-labellers.co.uk

ppma show preview

State-of-the-art load cell provides 'value'

A major highlight of the **Ishida Europe (C80)** stand will be the introduction of a new value for money checkweigher range. The DACS-W-012-N model incorporates DSP (Digital Signal Processing) and a state-of-the-art load cell, to offer high speeds and pinpoint accuracy.

Also on display will be a second model, featuring a colour touch screen that provides easy to follow instructions for line operators, with online help, self-diagnostics and fault finding, says Ishida.

Both models support Ishida's IDCS data capture software that can help factory managers make decisions regarding investment in new packing machinery or changes to existing operations and procedures by visualising and indicating where cost and efficiency savings can be made, claims the company.

Ishida will also be displaying its Atlas-122 bag maker for snack products which features double rotary jaw motion and advanced control technology, to combine fast speeds with accurate film registration and tight bag

seals. According to the company, the benefits of this technology are that it saves raw materials, minimises film loss and reduces downtime for film changes.

Multihead weighers showcased include models from its R, RS and FFW (Fresh Food Weigher) series. With the R and RS models operator intervention is kept to a minimum by an automatic feed control system and by the self-tuning vibratory system which can automatically adjust vibration amplitude to optimise product flow.

Designed to handle fresh sticky products the FFW weigher features pool hoppers arranged in a linear fashion and fed by belts from an infeed table. The operator is stationed within reach of the product infeed, and adjusts the flow of product so that each hopper receives an approximately equal amount. It can handle fresh sticky products such as diced and minced meat, poultry, fish and fruit.

T: +44 (0) 121 607 7700

E: info@ishidaeurope.com

Bagging put in its place

Chronos Richardson (F102) will demonstrate its range of bagging weighers, bulk throughput weighers, FIBC fillers, form-fill-seal, open-mouth bagging equipment, bag placers, sealers and controllers plus its range of robotic and standard palletisers.

A high-speed bagging line for pre-made

open-mouth bags, the CHRONO-FILL™ PTK offers bagging at rates up to 40 bags/minute and features a modular design.

A recent addition to the portfolio, the CHRONO-FILL™ FFS-H series, provides a universal, flexible packaging system for tubular form, fill and seal applications at all throughput requirements up to 2,200 bags/hour. The system is suitable for both free flowing and difficult to handle bulk materials. A major feature of the FFS product range is its compact design, says the company.

Gripper heads on the CHRONO-PAL™ RP robot palletiser, are designed to lift items onto the pallet and into position for optimum layer formation at speeds of up to 2,400 packs/hour, says Chronos.

T: +44 (0) 1159 351351

E: info@servicechronos.com



A CHRONO-PAL™ RP robot palletiser

Sticky problems solved by weigher

MULTIPOND (C60) will be introducing its patented solution for fully-automatic weighing of sticky products such as fresh or marinated meat, poultry and fish.

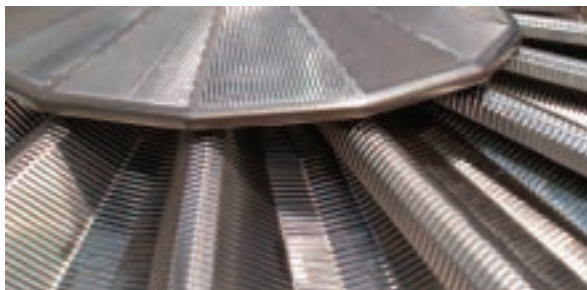
Based on a special surface profile on feed trays and the central distribution cone, the product feeding characteristics of the weighers are said to be considerably improved to provide controlled feeding even with difficult products.

Its stepped profile minimises the contact surface between the product and the cone and/or the feed tray surface, providing lower product adhesion.

Consequently, the solution does not require additional equipment, such as a screw conveyor, to control product feeding. The product is not exposed to any additional mechanical influences, except for the usual vibration from the feed trays.

As there is no need for any additional equipment the solution is compatible with the strict hygiene requirements in the food industry, says Multipond.

The distributor cone and feed trays follow the design and accessibility of a standard



Multipond's Fresh Food Profile

Multipond multihead weigher with the addition of its patented surface structure. All product contact parts can be removed quickly and easily for cleaning, product change and maintenance.

Multipond will also demonstrate a new machine designed primarily for weighing additional ingredients such as sachets, advertising articles or difficult to handle products such as herbs and salads. The semi-automatic radial weigher SAR 1001-A is an example of a custom-tailored weighing solution. The radial 10-head weigher can be installed in conjunction with any conventional multihead.

T: +44 (0) 1494 816644

E: info@multipond.com

Clever, compact combination

Loma Systems (E81) will demonstrate its next generation CW3 checkweigher and IQ3 metal detector combination machine, which can be engineered to suit individual application requirements.

The compact system weighs a wide range of flexible and rigid packs up to 6kg, and the combined checkweigher and metal detector is constructed entirely of stainless steel, including the bearings and rollers.

High quality electronics ensure optimum reliability and the multi-frequency detection adapts to new products and packages within seconds, says the company. Significant savings can be made when purchasing a single combined machine as opposed to separate checkweigher and metal detector units, explains Loma.

Utilising a USB connection and a PC

interface to facilitate diagnostic and statistical reports there is also an option to download these either to memory stick or to a customer's factory network.

Loma will also be showcasing two versions of its flagship IQ3+ metal detector system - the IQ3+ Metal Detector Conveyor and the IQ3+ PipeLine. The new IQ3+ PipeLine is a pumped metal detection system suitable for pumped liquid and semi-liquid products including diced, ground and chopped meat, dairy products, sauces, soups, jams and preserves.

Also on the stand will be Loma's latest X-ray system, the X4, offering the very latest advances in X-ray technology compliant with European standards and HACCP principles.

T: +44 (0) 1252 893300

E: uk.sales@loma.com

Accurate product inspection that you can rely on!

THE ART
OF
SCANNING



X-ray scanner SC

PPMA

Birmingham
29 Sept - 1 Oct 2009
Stand D83

OCS Checkweighers Ltd.
31B Avenue One
Station Lane
Witney, Oxfordshire
OX28 4XZ
United Kingdom
T +44.1993.701-970
info.uk@ocs-cw.com
www.ocs-cw.com

CS
CHECKWEIGHERS

A Wipotec Brand

Robotic projects

CenFRA (D110) Europe's independent centre for robotics and automation to the food and beverage industry, will be offering advice to food and drink companies.

It will showcase diverse examples of current automation, and the centre's team of specialist engineers will be on hand to discuss what support and guidance it can offer, including advice on affordable robotic and automation solutions, and the rewards to be gained from investing in new technology.

Visitors will also learn about CenFRA's automation factory audit.

T: +44 (0) 1302 765680

E: enquiries@cenfra.co.uk

Detector sensitivity

The new THS/MS21 metal detector from **Constant Instruments (D82)** has sensitivity up to 30 per cent higher than earlier models and can detect contaminant particles at high speed even in difficult, highly conductive food products with high levels of salt or fat, says the company.

"The new multi-spectrum models provide inspection standards until now only seen in the pharmaceutical industry," said managing director Leslie Hunt.

Manufactured by Italian metal detection specialists CEIA SpA, the THS/MS21 meets all HACCP and GMP criteria and is fully compliant with FDA 21 CFR Part 11 regulations. Non-magnetic and magnetic metals



can be detected, including high grade stainless steel.

Data relating to each detection and ejection are stored in an events memory which certifies production quality, as well as the necessary periodic test phases.

The detector constantly

monitors its detection characteristics, allowing compensation for any variations arising from environmental factors.

An Autolearn feature optimises detection sensitivity for maximum speed and precision.

New tools have been added to help installation and maintenance technicians measure the environmental compatibility of the detector.

This includes general mechanical and electromagnetic compatibility, specific electromagnetic compatibility and automatic examination of the degree of interference produced by the conveyor belt.

T: +44 (0) 1903 739333

E: sales@constant-ceia.com

Making your product unique

Labels and labelling technology

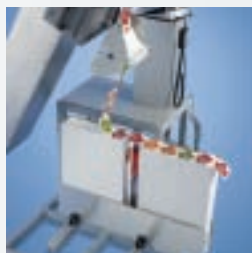
by PAGO highlight brands and enhance your product's success.

- With innovative printing and finishing technology,
- the very latest labelling machines,
- networked goods identification,
- to say nothing of expert advice and service at every step.

Make your products truly distinctive. With the wide experience of a system specialist. For your success!

Pago Ltd, Centenary House, 7 Crown Gate, Severalls Industrial Park, Colchester, Essex CO4 9HZ T: 01206 755206 F: 01206 755210 E: labellers@pago.co.uk www.pago.co.uk

Pago AG, Industrie, CH-9472, Grabs SG, Switzerland T: +41(0) 81 772 35 11 F: +41(0) 81 772 36 55 Postfach, CH-9471, Buchs SG 1 E: admin@pago.ch www.pago.com



PAGO

For your success!

Greener washing

Industrial Washing Machines (E45) will feature a tray washer and cabinet washer from the company's range of standard and custom products, all of which incorporate re-circulating systems designed to help minimise environmental impact.

Its latest Edi13 ALTA utensil washer is the first of its type to appear on the Government's water technology list. So it automatically qualifies for the ECA (Enhanced Capital Allowances) scheme. This allows 100 per cent of the capital cost to be offset against corporation tax in the first year.

Also on show is the Crusader T400 Twin Tank two-stage tray washer. The first stage provides continuous jetting with hot water and detergent, and the second continuous jetting with hot water only. A cold rinse is also provided, and a range of blow-off and heat drying options are available.

T: +44 (0) 121 459 9511

E: sales@indwash.co.uk



Energy efficient retort for large volumes

A flexible and energy efficient solution to the continuous retorting of large volumes and a flexible manufacturing tool allowing process and packaging versatility will be demonstrated by **ACB-HYDROLOCK (C73)**.

The company has developed a series of specific carriers, together with a material handling system, to match many different applications. Depending on the product, the equipment can be set for either constant or zero rotation and, in most cases, the rotation allows faster and more homogeneous heat penetration, claims the French company.

Developed for cans and

plastic bottles the process is now suitable for pouches, plastic bowls, cups and trays.

The major advance, explains ACB, comes from the addition of a 'pre-heating' module consisting of an atmospheric enclosure set to receive the product before it enters the pressurised vessel.

Product is pre-heated using the energy from the cooling water loop outlet, saving sterilisation time and energy. Between 10 and 30 per cent of sterilisation steam can be saved, depending on the product.

As the exchange of heat with the product cools the water,

more energy is saved in the utility cooling circuit as well as ensuring a constant temperature of the product before it enters the sterilisation phase.

The system brings flexibility to the treatment of sensitive packaging by providing an adjustment of the product's internal pressure (based on temperature) before it enters the pressurised vessel, says ACB.

The equipment comes fully assembled on its own frame, including material handling, water regulation, and quality control systems.

T: +33 251 138 440

E: rmarquez@acb-hydrolock.com

Clipping system's UK debut

Interfood Technology (C42), the sole distributor in the UK and Ireland for Poly-clip System, will demonstrate its new plastic clip based system for the first time in the UK.

Plasti-Clip line EZ P 600 ensures secure bag and net

packaging with a plastic rather than the conventional metal clip, says Interfood.

The system closes poultry bags, bakery products, fruit and vegetables. In fact anything in a bag which is not required to be placed in an oven can now use

a plastic clip that is bacteria-resistant, microwave-safe and boil resistant, it claims. The clip is also freezer safe and therefore suitable for sealing ready meals.

T +44 (0) 1844 217676

E: info@interfoodtechnology.com

SEALPAC *They do exactly what they say*

Try our new range of Tray Sealing and Thermoforming machines

See us at The PPMA Show

See us at The PPMA Show

Sealpac UK Ltd, Unit 5, Wokingham Commercial Centre, Molly Millars Lane, Wokingham, RG41 2RF
Tel: 0118 977 3400 Fax: 0118 989 3995 E-mail: stevebanham@sealpac-uk.com www.sealpac-uk.com

Hall 5 Stand D81

Ready steady on the shelf

Endline Machinery and Quin Systems (B10) will unveil a new version of the Versapack, a combined case erector/case packer suitable for shelf ready packaging.

The Versapack is a combination of Quin's high speed automatic RTheta casepacker and an Endline 220 series case erecting machine. It has the ability to run at very high pick rates and case throughputs, claim the companies.

Products can now be packed in almost any orientation including 'On-Edge', which presents the product to its best advantage on the supermarket shelf. Additionally, it has a small footprint offering a compact solution for use in restricted areas.

A major endorsement for the system came from United Biscuits which has reported a return on its investment in just 18 months, after installation at the company's Harlesden factory to assist with the increased demand for McVitie's Digestive twin pack.

T: +44 (0) 1767 316422
E: sales@endoline.co.uk

All wrapped up for perfect presentation

Marden Edwards Group (C81)

will be exhibiting its recently introduced Evo-Fold overwrapping machine. Designed as an entry level model, the automatic over wrapper is suitable for medium speed applications.

Competing directly with automatic shrink wrapping machines on price Evo-Fold offers reduced energy consumption, the use of low cost films and a high quality wrap and seal, says the company. Typical uses include tea, confectionery, cosmetic and pharmaceutical products.

Evo-Fold will be shown wrapping with both a BOPP clear film and a newly introduced, fully biodegradable heat sealable paper. Wrapping with heat sealable paper instead of film provides the product with a high quality, gift wrapped appearance, claims Marden Edwards.

Details of the complete range of over wrapping machines for high speed, large format, tight wrap and high quality presentation packs, will be



Marden Edwards' Evo-Fold

available. Marden Edwards' comprehensive design capabilities include a variety of bespoke handling and wrapping solutions.

Shrinkwrap expertise will also be on show, as the latest generation transit sleeve wrapping machine from **WRAPs UK** now has a more robust construction for 'heavy duty' applications yet continues to be simple to use and straightforward to maintain, says the company.

On show will be the LST50 range of semi automatic L

sealers which, says WRAPs, provide both performance and value for money. Consisting of an integrated L sealer and heat shrink tunnel, the mobile 'plug-and-play' system is easy to install, using a standard 13 amp electrical supply. Low running costs are matched by a proven reliability to give excellent pack presentation, it claims.

T: +44 (0) 1202 861200
E: sales@mardenedwards.com
WRAPs UK:
T: +44 (0) 1202 870201
E: enquiries@wrapsuk.com

METTLER TOLEDO Receives Silver Medal at the European FoodTec Awards

Combining accurate checkweighing with reliable x-ray inspection, the **GARVENS XS3 AdvanChek X-ray CombiWeigher** offers the best protection for both consumers and your brand.

- Dynamic checkweigher with underweight/overweight checking
- High accuracy meets all national calibration requirements
- Detection of foreign bodies such as glass, metal, stone and high density plastic

See the innovative X-ray CombiWeigher at PPMA 2009, stand G51

► www.mt.com/uk-ppma

Call 0870 066 3150 or email pi.mtuk@mt.com



METTLER TOLEDO

Phantom detection gives wider choice



Fortress Technology (D100) will be highlighting its range of high performance Phantom metal detection systems for the food, pharmaceutical, timber, plastics and textile industries.

The Phantom Gravity metal detector has been developed to inspect a broad spectrum of bulk products that can be gravity fed through a pipe. These products include flour, rice, cereals, powders, corn, sugar, chemicals and nuts, says the company.

Capable of detecting and rejecting both ferrous and non-ferrous metals, it incorporates the latest digital signal processing technology for precision, speed and inspection results, says Fortress.

Available in painted aluminium or stainless steel it features standard and custom aperture or pipe type and sizes. The Gravity metal detector is modular in design and is built with anti-static pipes, air control and a ceiling support frame.

An automatic reject valve diverts contaminated product into a reject tank. Its UltraSense function ensures high sensitivity levels for detecting the smallest of metal contaminants, claims the company.

The Vector 'all-in-one' integrated conveyor was designed to realise the full potential of the Phantom standard rectangular aperture metal detectors while maximising the accuracy of the whole system, states Fortress.

It is British Retail Consortium accredited.

Featuring a fully modular hygienic design, the Vector conveyor is suited to industrial applications and harsh production environments, including wash down.

T: +44 (0) 1295 256266

E: info@fortresstechnology.co.uk

Looking at the Whole

often provides the best solutions. Innovations cannot be squeezed into an ordinary category of machine technology. Therefore, **enviro** ranges over three dimensions: ecology, economy, and ergonomics. **enviro** stands for intelligent technology which is environmentally friendly, cost-saving, and efficient. This way, we assume responsibility for our world and the people who live in it.



Designs on green issues

Cermex (D31) will illustrate its commitment to sustainable packaging development through its GreenUP programme. The group has identified three lines of action.

Eco-Behaviour: will promote initiatives for responsible and economic use of company resources at all levels of administration, production and purchasing.

This includes reprogramming the automatic update schedules for software so that the update is done during working hours. This has reduced Cermex's electrical power consumption by almost 150,000 kW/year.

Eco-Design: One objective is to develop machines which consume less while maintaining, or even increasing their performance.

This has led to a 10 per cent reduction in energy consumed by heat tunnels fitted to its range of shrink-wrappers.

Eco-Packaging: Cermex is participating in the eco-design of packaging in partnership with key suppliers in the corrugated cardboard and film sectors, it reports.

The main objectives are to determine the most efficient material; generate savings in material during manufacture; and optimal use of the packaging during its life cycle.

The company is backing a new range of cardboard, **Eco-newpack®**, developed by Clareo to minimise the amount of cardboard volume required and reduces scrap during packaging manufacture
T: +44 (0) 1480 455919
E: sales@cermexuk.com



Kissing goodbye to lumpy conveying

Volkman (F2) is giving the first UK outing to a new range of VS vacuum conveyors featuring improvements designed to increase safety and efficiency.

First shown at Achema earlier this year, the patented modular connection allows easier cleaning and higher safety in hazardous areas.

All discharge valves feature larger discharge outlets and actuators are all situated externally; there are no pneumatic parts inside the separator. All modules are made in 316L stainless steel and are ATEX approved.

Also on show for the first time

in the UK is the Big-Bag unloading station that allows unloading of all kinds of materials without the risk of dust emission from Big Bags and FIBCs in hygienic production environments.

The system utilises a vacuum conveyor saving money and labour in addition to improving quality and safety, according to the company.

The latest modular lump breakers can reduce most agglomerates and lumps to make vacuum conveying and further powder processing possible, states Volkman. They are easily connected at the discharge point

of Big-Bag unloading stations or other, existing bag unloaders. The hygienic design allows quick cleaning.

Solutions for conveying tablets such as empty and filled capsules, and dragees include transporting in a vacuum air stream for discharge directly into bins or packaging machines.

The integrated energy trap reduces the kinetic energy that may cause damage to the tablet, claims the company. All dust can be kept within the vacuum conveyor, increasing overall product quality.

T: +44 (0) 1494 512228
E: mail.uk@volkmann.eu



Wok ever it is you want – we got it!

BCH (E91) will be demonstrating the industrial ProWok for fresh, healthy and high quality stir fry foods to a chef quality standard.

The patented method used by ProWok solves the problem of vegetables losing their crispness and bite, while meat retains its roasted taste using minimal fat or oil content, says BCH.

The wok has a capacity of up to 400kg/hour of raw ingredients, depending on production requirements, and is suitable for breadcrumbs, onions, carrots, peppers, beef, chicken, bacon, potatoes, popcorn and many other 'wokable' products.

T: +44 (0) 1706 852122
E: info@bchltd.com

Locked in to Insight

Lock Inspection Systems (C31) will be showcasing its new INSIGHT range of metal detectors for food and pharmaceutical.

The culmination of many months of development, the system responds to the growing trend in the food and pharmaceutical industries to integrate production and inspection machinery.

Benefits, including higher sensitivity to all metal types, improved stability to vibration and complex product signals, result from an Integrated Digital Head and advanced OPTIX detector management software.

Initially available in horizontal head specification, gravity fed throat type and pipeline versions will follow in 2010.

T: +44 (0) 161 624 0333
E: insight@lockinspection.co.uk

As cheap as foam

Omega Packaging Machinery (B33) will unveil a foam-based pallet wrapper that, it says, cuts the time and cost of palletising and improves its environmental footprint.

The traditional protective cardboard cover and base, cardboard sheets and strapping in a single prepared pallet can cost around £4.00, states the company. But Omega says this machine automatically inserts foam around the top and base of the pallet, delivering



protection for approximately 60p a pallet.

It also cuts the time taken to prepare the pallet taking about 45 seconds to apply the foam.
T: +44 (0) 1606 598111
E: b.hayes@ihseurope.co.uk

From kettles to washers

The Food Machinery Company (H48) will show its range of feed conveyors, JONI cooking kettles, KULP volumetric depositors, UNIION tunnel washers and FMC vacuum packers.

The range comprises: BOHUI vertical form fill & seal machines; HIGH DREAM high speed multi head weighers; ACK linear weighers and auger feeders; and A0-CHI metal detectors and check weighers.
T: +44 (0) 1634 272345
E: sales@foodmc.com

Spanish serve up a sachet of surprises

Springvale (G82) will announce its new representation of specialist horizontal form, fill seal equipment for sachets and Doypacks from Mespak, of Barcelona.

Mespak machines can produce flat sachets with 3 or 4 seals and stand-up pouches with a capacity of up to 10,000cc on a FFS machine and up to 3,000cc on a pre-made pouch machine. There are features for spout/zipper insertion in-line.

Another new name is Leu-Tronic which manufactures machines that re-work faulty

packs (sachets, sticks, bags, cartons) allowing the contents to be re-used instead of going to waste or animal feed.

The knife-less system is already in use at major blue chip companies for tea, coffee, confectionery, sugar and granular food products.

Also represented will be Feige weigh filling machines for filling liquids into rigid containers (10 – 1000 litres).

On show for the first time will be its FFS system for plastic bags of liquid and pasty products of up to 25kg in capacity at up to 600 bags/hour.

The bags can have a reinforced carry handle punched in the top seal and are viewed as a possible replacement for buckets in some markets. The system includes an in-line leak detector.

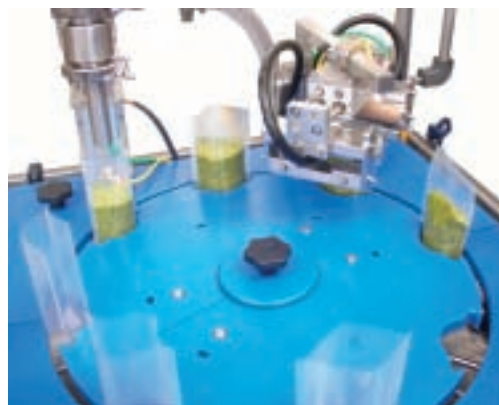
Langen Packaging Group and U-E-T will be promoting their complementary cartoning solutions including U-E-T's hand fed compact machines and Langen's fully automated infeed/cartoning systems for the food, medical device and pharmaceutical industries.

T: +44 (0) 1420 542505
E: springvale@springequip.co.uk

Pouch filler's delicate touch

Riggs Autopack (B51) will be exhibiting its new semi-automatic pouch filling and sealing machine designed specifically for opening, filling and sealing stand-up plastic pouches.

This compact, mobile, stand alone rotary machine provides damage free depositing of hot and cold delicate products and is particularly suited for companies producing liquid or semi-liquid food items such as soups, sauces, marinades, pastes and



pesto, it claims. The filler is capable of operating 10 – 20 packs/minute and can be adapted to handle plastic pots,

tubs and jars for use by a single operator.

Riggs will also display its ready meal make-up indexing conveyors which, when used in conjunction with a depositor, help eradicate manual depositing of separate meal components into foil or plastic trays.

They can easily handle single or multi-portion meals and achieve equal mixes of product per meal, it explains.
T: +44 (0) 1282 440040
E: riggs@autopack.co.uk

Bulky bags not so hard to handle

Spiroflow (B50) will exhibit examples from its range of conveying and bulk bag handling equipment.

These are sold mainly into the food, chemicals and

pharmaceutical industries. The company will also demonstrate its flexible screw conveyors showing their functionality and capabilities as accurate loss-in-weight and gain-in-weight

metering feeders. These conveyors are suitable for free flowing salt to sticky lumps of broken chocolate.

T: +44 (0) 1200 422525
E: sales@spiroflow.com



Delta Blade



Helical Blade



Rotary Drum Blender

PPMA SHOW STAND B9

POWDERS

GRANULES

PASTES

BATCH

CONTINUOUS

The Complete Range from 2 to 25,000 litres

Versatile Mixing Machines

- Delta Blade (plough), Cookie Mixes to Flavours.
- Helical Blade (ribbon), Sugar Paste, Fruit Cake Mix to Herbs & Spices.
- Rotary Drum Blender, Coffee Coating & Tea Blending.

Complete Mixing Plant design to commissioning.

Test Mixers available for production development.

Production scale machines for short or long term hire.

Email or Phone, to get the optimum solution for your Mixing Process

J.R. BOONE Ltd

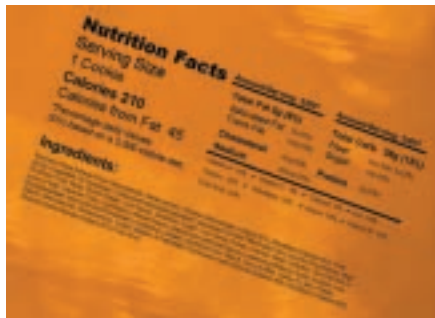
18 Silk Street, Congleton,
Cheshire, CW12 4DH
Tel: +44 (0)1260 272894
Fax: +44 (0)1260 281128
www.jrboone.com
e-mail: sales@jrboone.com

Getting smarter with large format printer

Among the new products on view, **Markem-Imaje (D10)** will exhibit the SmartDate® 5/128, which brings high levels of versatility to large format thermal transfer printing, it is claimed.

The new coder can be switched between intermittent or continuous modes, and be configured for either left- or right-handed operation. It offers users a choice of control options – colour touch-screen, classic controller or web browser-based integration.

For intermittent applications such as bagging and labelling,



SmartDate® capture with Markem-Imaje

the SD5/128 has a large 128 x 75mm print area, and in continuous mode has a print capability of up to 128 x 150mm for flow wraps, sachets and pouches.

Rather than use two coders to mark top and bottom or both

sides of a pack, a single SmartDate 5/128 coder can generate multiple prints in the same cycle. Typical applications include ingredients' listings and nutritional data; generically packed confectionery, pulses, spices; also hardware and electrical products needing instructions, diagrams and graphics; the bagging of aggregates, seeds and composts; multi-lane packing and cross-web label printing.

Also on show is Touch Dry® hot melt ink technology.
T: +44 (0) 161 333 8400
E: uk@markem-ijaje.com

Bags more power with new sealers

Fischbein-Saxon (C43) will launch two powerful models in its bag sealer range. The Saxon Band Sealers SB3000 and SB4000 upgrade the Saxon Band 15 and 20 to provide state-of-the-art machines, it says.

Compared with the previous models, the two band sealers offer an increased life, easy set up and low maintenance, and

their power facilitates the sealing of thick bags at high speeds, says Fischbein.

Band sealers use heating elements to heat the bags by direct contact through a pair of bands with high thermal conductivity. These move in synchronisation with transport belts. The seal width on the new models is 14mm.

Technical advances across

the Saxon range include a new mainframe with a simplified design and a stainless steel construction to meet stringent health and safety requirements. The VFD speed controller (standard) and the electric column meet the requirements for flexibility and limited labour input, the company reports.

T: +44 (0) 870 160 9314
E: sales@fischbein-saxon.co.uk

Hot melts set pace for the future

Beardow Adams (G63), a UK producer of hot melt adhesives, will exhibit two new additions to its BAMFutura packaging products range.

High heat resistant and fast setting variants of the company's established hot melts are claimed to be ideal for high speed lines, particularly

cartons running in excess of 200/minute.

BAM 1726 is a high tack grade for labelling PET carbonated drinks bottles. Its cohesive strength copes with the expansion of bottles that are shaken or become warm, says Beardow Adams.

The adhesive can also be

used on a wide variety of label stocks and containers.

BAMFutura hot melts eliminate the odours and fumes in the production process through the use of high quality raw materials which do not taint foodstuffs, claims the company.

T: +44 (0) 1908 574000
E: info@beardowadams.com



Floors with no flaws

A two-hour flooring concept Flowfast from **Flowcrete (D43)** is an ultra fast-track resin system usually ready for use within just two hours of application.

Its speedy installation capability cuts down on the labour costs and a manufacturing site could be fully operational after an overnight application, delivering significant cost savings, says the company.

Also on show are: Flowcoat SF41, a coloured floor coating often used in tandem with the renovation screed Flowscreed Industrial Top to create a smoother surface. Noted for its speed of application, the system is suitable for refurbishing old, worn out surfaces. Flowshield SL, a self-levelling system, copes with high traffic, including trolley and rubber wheeled forklift trucks; and Peran ESD SL an electrostatic dissipating floor which can help avoid problems associated with static from automated vehicles.

T: +44 (0) 1270 753000
E: uk@flowcrete.com



Ecoplast economic stretch wrappers

Aetna Group UK (F97) is launching the latest models in its range of pallet stretch wrapping machines - Ecoplast Base, Ecoplast FRD and Ecoplast PPS.

All models feature a 1,650mm turntable wrapping up to 2,000kg, and carry a 3 year warranty.

Ecoplast Base is an 'entry level' machine for companies looking to upgrade their basic palletising operations from manual to semi-automatic. The Ecoplast PPS also has a power pre-stretch facility.

"This will allow companies who have not previously considered semi or fully automatic pallet wrapping to do so without having to make a big investment," says Aetna Group UK's national sales manager Paddy McCartney.

"It will also enable them to see the cost benefits in film savings and labour as well as health and safety advantages compared with manual wrapping."

Aetna believes that when companies need to expand they

will graduate to Rotoplat models, such as Rotoplat 507 PFS power pre-stretch pallet wrapper. The machine features 250 per cent power pre-stretch resulting in major film savings

All Aetna pallet wrappers are designed to use the minimum amount of energy and materials through increased control of the wrapping cycle, said McCartney.

The company offers a free trial period and a training programme to support its customers.

T: +44 (0) 1234 825050
E: colin.barker@aetna.co.uk

Automatic shrink for Blu-ray discs

German companies will be linking up with their agent for UK and Ireland, **Friedheim International (F40)** which will feature a fully working production line packing Blu-ray optical discs.

The line will comprise a Multiplex Pico fully automatic film wrapping machine with linked Shrink Tunnel from Beck Packautomaten, shrink-wrapping Blu-ray boxes being fed by Pfankuch Maschinen's Model PSA 450-G Vacuum Shuttle Feeder.

Pfankuch Maschinen's Model ASB 175K-BNA Feeder Head 'Bottleneck Applicator', will be demonstrated placing promotional bottleneck hangers onto a revolving conveyor of plastic bottles.

Friedheim International's other packaging suppliers will



also be demonstrating: Audion Elektro (stand-alone and versatile shrink wrapping machines) and Iman Pack (horizontal and vertical form, fill & seal machines; wet wipe and dry wipe machines; vertical and horizontal wrappers).

T: +44 (0) 1442 206100
E: info@friedheim.co.uk

Hose-down tolerant

Continuous hose-down demonstrations will be given by **Lafert Electric Motors (B41)** to show that its IP66 'Marlin' stainless motors are hose-down tolerant and corrosion proof making them suited to hygiene sensitive applications.

Exhibits will also feature examples of Lafert's single phase and brake motors, plus various custom-engineered motors.

Non-standard engineering solutions are the company's speciality making up some 90 per cent of production.

Most are based on one of the 20,000 shaft and flange options on the company's database.

Power ratings are from 0.18 to 7.5 kW in frame sizes up to 132 as TEFC machines. Smaller units (up to 0.75 kW) are also available from 63 frame size as TENV machines.

T: +44 (0) 1270 270022
E: lafertuk@lafert.com

SHOW BRIEFS

Streamlining of high throughput production systems will be shown by **Astech Projects (B27)**.

The automation systems developer is an ABB robotics certified partner and its main theme will be pharmaceutical production and packaging applications.

Astech specialises in bespoke automation including dedicated equipment for drug delivery automation, consumer goods testing and laboratory automation.

On show will be a newly developed automated packaging system featuring robotics capabilities.

T: +44 (0) 1928 571797

E: info@astechprojects.co.uk

DON'T FORGET!

When planning your visit make sure you include the PPMA

STAND C90



Processing & Packaging Machinery Association

Ultrasound versatility

Ultrasound technology to seal and cut packs of ready-to-use syringes will be demonstrated on a new TLM-T400 thermoforming, filling and closing machine from **Schubert(C30)**.

It will show how the system produces PET blister cartons at its thermoforming station, and robotically places product into the cavities before simultaneously sealing, cutting and perforating the packs using ultrasound tools.

Schubert says productivity is boosted by ultrasound technology as it delivers faster sealing times than conventional methods. Pack contents are unaffected by the process as it reaches no more than 30°C at room temperature. Cutting forces are reduced, which leads to less wear and tear.

"The process also requires less energy. The ultrasound method requires power only very briefly - 200-300 milliseconds/cycle," explains chief executive Gerhard Schubert.

He added that other value-added benefits include easier tool changes as the ultrasound versions are considerably lighter than traditional sealing equipment while the ability to



achieve cleaner contours aids packaging design development.

The TLM-T400 line is designed to process all packaging polymers and offers a maximum output of 20 cycles/minute at a drawing depth of up to 150mm.

It can undertake sealing and punching in a single operation and requires only one tool to be changed to accommodate different tray sizes and materials.

After punching out the finished packs, the skeleton web is drawn upwards and wound on to a reel or sent to a shredder.

Quality control is monitored

by a downstream image processing system fitted to the final TLM-F44 packaging station.

Another version, the TLM-T800, features two separate thermoforming areas and has a maximum output of 20 cycles/minute at a drawing depth of up to 80mm.

It is equipped with a number of features including two thermoforming areas, automatic roll change facility for the pair of 400mm film webs, a quality mark imprinting system and an ultrasound sealing and punching device.

T: +44 (0) 1676 525825

E: contact@schubert-uk.co.uk

VC999 PACKAGING SYSTEMS

MEETING ALL YOUR PACKAGING NEEDS

Vacuum Chamber Tray Sealer Thermoformer Packaging Materials

VC999 Packaging Systems (UK) Limited
 10 North Portway Close, Round Spinney, Northampton, NN3 8RQ, UK
 Tel: 01604 643999 Fax: 01604 499994 www.vc999.co.uk info@vc999.co.uk